

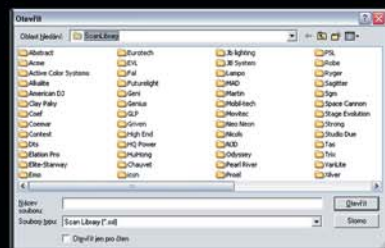
## CYBER CONTROL software features:



DMX LIGHTING SOFTWARE



# CYBER CONTROL



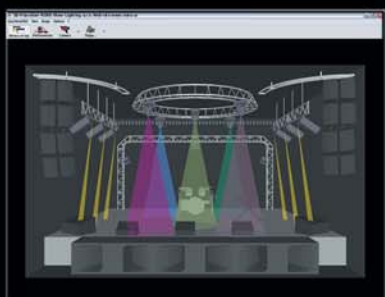
### FIXTURE LIBRARY

A major advantage of this system is the large Library of fixtures. The Library includes many name brands of lighting. New fixtures are added as they are discovered. All Library Fixtures are created using the DMX charts found in the manuals. If a fixture is not found in the library, it may be added using the Scan Library Editor.



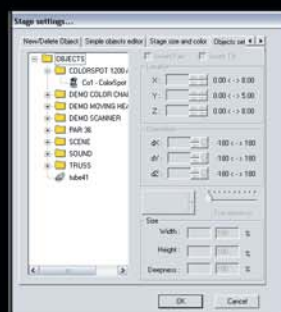
### SCAN LIBRARY EDITOR

The Editor allows for simple creation of fixtures by entering channels and values, found in the fixture's user manual. Existing fixtures found in the Library may be modified also.



### 3D VISUALIZER

The 3D Visualizer is automatically updated every time a new fixtures is added to the program eliminating the need to create 3D fixtures. The fixture in the Visual Control move in real time while simulating the show. Some of the many advantages to this include: moving fixtures and truss around, seeing movement, color change, and the ability to invert the X/Y personalities. The 3D Visualizer is also equipped with a Virtual Camera which allows viewing from all angles, allowing zoom in/out and 360° rotation. The Visual Control is also considered a bonus and sets the package above all other control consoles.



### 3D VISUALIZER EDITOR

The Editor allows for easy addition or removal of any objects in the setup. The position of the objects may be modified after setup. Positions are set using XYZ positioning. The size of stage/setting may also be modified.

### MINIMUM SYSTEMS REQUIREMENTS

Windows ME/XP  
800Mhz 250MB RAM  
DirectX 8.1  
USB Port  
800 x 600 Screen Size  
Video Memory 16MB VRAM



www.robe.cz

**Head Office & Factory:** ROBE Show Lighting s.r.o. ■ Házovice 2090 ■ 756 61 Rožnov p. Radh. ■ Czech Republic ■ Tel.: +420-571-625 792 ■ Fax: +420-571-626 337 ■ E-mail: robe@robe.cz  
**America:** ROBE America ■ 5299 N.W. 108th Avenue ■ Sunrise ■ FL 33351 ■ USA ■ Tel.: (954) 615-9100 ■ Fax: (954) 615-9105 ■ E-mail: info@robeamerica.com ■ www.robeamerica.com  
**Italy:** ROBE Italia srl ■ Via Pesenti N° 78/A ■ 46040 Medole MN ■ ITALY ■ Tel.: (0376) 898316 ■ Fax: (0376) 898304 ■ E-mail: info@robeitalia.it ■ www.robeitalia.it  
**UK:** ROBE UK Ltd. ■ 3 Spinney View ■ Round Spinney Ind. Est. ■ Northampton ■ NN3 8RF ■ Tel.: 01604 741000 ■ Fax: 01604 741041 ■ E-mail: info@robeuk.com ■ www.robeuk.com

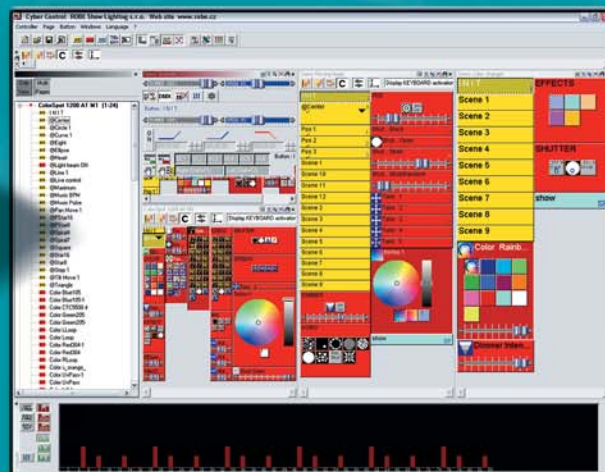


## CYBER CUE / CYBER PRO (USB/DMX Out)

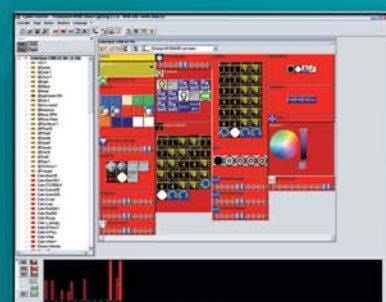


CyberCue and CyberPro enable a show to be created on computer and run directly from a PC using a USB interface - a hardware tool supplied with the software. Once the show is completed, the data can be uploaded into the USB Interface, the PC can be disconnected, and the show actually run from the Interface - thanks to 'Stand Alone' mode.

- 512 DMX Channels
- 3D Visualizer
- Large Library of Fixtures
- Shape Library
- Unlimited Scenes
- Unlimited Cycles
- Multi Media Triggering
- Touch Screen Ready
- Hot Key Triggering
- LIVE Control
- Automatic Chaser
- Automatic Sequencer
- Follow Spot feature

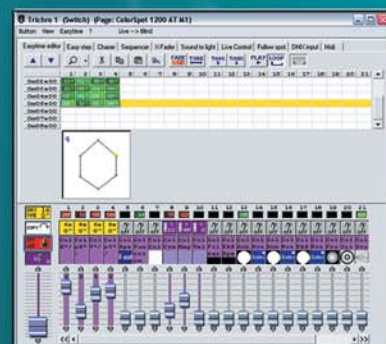


### Software features for CyberCue/CyberPro:



#### CONTROL

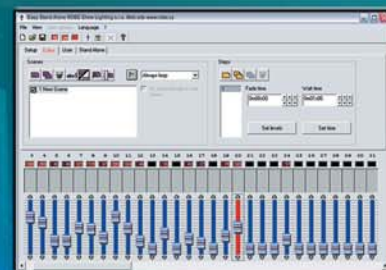
This interface allows control of automated and conventional lighting fixtures. Automatically configures each fixture with simple access buttons. It creates preset scenes with movements and configures every function of your light to an on/off button. This makes programming scenes a snap! The Cyber Control 2004 software program can control up to 5,120 DMX channels by adding multiple USB/DMX interface devices. There are 3 options to choose from.



#### EDITOR

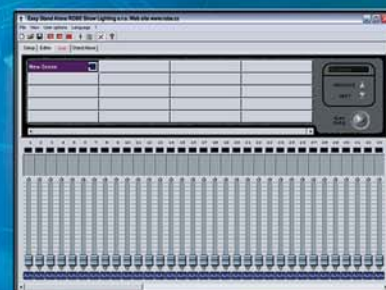
Every scene, switch of function may be modified using this feature. The Editor allows modification and manipulation of shapes and patterns in real time. It also allows creation of custom color sequences and schemes using the included spreadsheet. Direct access of fixture for movement is another feature of the Editor.

### EASY STAND ALONE Features



#### EASY STAND ALONE

The Easy Stand Alone is a separate program system which is included. This is a simple program designed to help with testing and setting up fixtures. This system also lays out fixture profiles and displays the starting DMX dip switch setting for fixtures. Easy Stand Alone will also allow recording simple scenes, and downloading them to USB/DMX interface using the record feature.



#### EASY STAND ALONE RECORDER

The Recorder allows saving simple scenes, created with Easy Stand Alone. Allowing a maximum of 255 static scenes or approximately 100 moving scenes.

## CYBER PRO - EXTRA (USB/DMX Out)

CyberPro contains the multimedia extension EASY SHOW, allowing users to add multimedia music and image files (e.g. WAV, MP3, CD, AVI, MPEG, etc) into their onscreen show. Harnessing the power and potential of the 3D visualiser, the simulations will play-back with these multimedia files when using CyberPro.

- MIDI In (Midi Notes Triggering)
- MIDI Time Code (In & Out)
- Sound to Light (Audio In)
- Date/Timer Triggering
- Access to EASY SHOW software

#### EASY SHOW

The latest Software developed to work together with the Cyber Pro USB/DMX Interface. Easy Show allows the combination of music tracks together with lighting scenes to create a dramatic seamless performance. Easy Show works using a timeline system to select accurate positioning to the music. Easy Show also allows the triggering of video clips together with light scenes to further enhance the show! The following files may be played using Easy Show (.wav, .mp3, .avi, .mpeg, .divx and .dvd)



## VISUAL CONTROL (USB/DMX In)



A special version of the software - **Visual Control** - enables the "downloading" of show data from a lighting desk to a computer for offline editing.

Visual Control works with new USB-DMX IN interface allowing to connect a DMX signal coming from any external DMX controller. Visual Control is able to show beam pan/tilt, static and rotating gobos, color wheels, iris, CMY color mixing, shutter, dimmer and zoom of any lighting fixtures.

- Trigger Scenes,
- Switches or Cycles from an external DMX board (software)
- Override DMX Channels on automated or conventional fixtures
- Use of Visual Control using your favorite Control Console

