



AnaKonda
KAN200+
USER'S GUIDE
English



CONTENTS

1. INTRODUCTION	6
2. APPLICATIONS	6
3. KEY FEATURES	6
4. UNPACKING	6
5. PACKAGE CONTENT	6
6. SAFETY	7
7. PHYSICAL	8
8 CONNECTORS AND SET UP	9
9. COVERAGE	10
10. ACCESSORIES AND CONFIGURATIONS	11
11. SERVICE	12
12. SPECIFICATIONS	13
15. DECLARATION OF CONFORMITY	14

SYMBOLS



K-array declares that this device is in compliance with applicable CE standards and regulations. Before operating the device, please check your specific country regulations!



WEEE

Please dispose of this product when it reaches the end of its life by bringing it to your local collection point or recycling center for electrical/electronic items.



This symbol alerts the user to recommendations about the product's use and maintenance.



Warning! Dangerous voltages: RISK of electric shock.

Terminals marked with this symbol are HAZARDOUS LIVE and the external wiring connected to these terminals requires installation by an instructed person or the use of ready-made leads or cords.



This symbol alerts the user to the presence of recommendations about product's use and maintenance.



This device complies with Restriction of Hazardous Substances Directive.

1. INTRODUCTION

The K-array Anakonda KAN200+ is a truly revolutionary speaker module born to meet the needs of places where few had dared to go up to now. It is designed to be a problem solver in situations where a traditional speaker box can't be used but where good intelligibility, ultra-reliability and a sleek design are required.

The KAN200+ is the perfect fit for any distributed sound application. Its dedicated presets allow KAN200+s to serve as a flexible PA system - either standalone or combined with K-array subwoofers. Its lightness and flexibility help it to be easily integrated in existing structures.

Each KAN200+ module is 2m (6.6 ft) long. Up to 16 modules can be interconnected, creating a continuous sound line, 32m (209,97 ft) in length. Integrated male and female speakon NL4 connectors hide all connections inside the "body" of the speaker, which creates an elegant, seamless line.

Each KAN200+ includes 2 fabric socks, one black and one white, which can be used to cover and protect the speaker from foreign objects such as dust, and to quickly change the system's color to suit the application. Wall brackets are included in the package to make the installation as easy and as fast as possible.

All the components of the Anakonda KAN200+ are designed by the K-array R&D department and made in Italy under the K-array quality control system.

2. APPLICATIONS

- Front fill
- Outdoor installations
- Theme parks
- Indoor and outdoor Scenography design

3. KEY FEATURES

- Flexible 2mt chassis
- Integrated NL4 connectors
- High impedance for long lines
- IP55 for outdoor installations
- Fabric socks available in black and white

4. UNPACKING

Each K-array loudspeaker is built to the highest standard and thoroughly inspected before leaving the factory. Upon arrival, carefully inspect the shipping carton, then examine and test your new loudspeaker. If you find any damage, immediately notify the shipping company. Only the consignee may institute a claim procedure regarding the system's electronic equipment.

5. PACKAGE CONTENT



6. SAFETY



WARNING



Read all safety information below and operating instructions before using this device to avoid injury.

Safety and handling information



Warning. Failure to follow these safety instructions could result in fire, shock or other injury or damage to the device or other property.

It is important that loudspeaker systems are used in a safe manner.

Avoiding Hearing Damage. Professional loudspeakers are capable of producing extremely high sound levels and should be used carefully. Never stand close to loudspeakers driven at high volume. Set the volume to a safe level. Over time you can adapt to a higher volume that may sound normal but can be damaging to your hearing. Hearing loss get worse every time you're exposed to a sound level of 90 dB or over for an extended period of time. If you experience ringing in your ears or muffled speech, stop listening and have your hearing checked. The louder the volume, the less time is required before your hearing could be affected.

Choking Hazards. This device contains small parts, which may present a choking hazard to small children. Keep the device and its accessories away from small children.

Keeping the Outside Clean. Handle the device with care to maintain its appearance. To clean it, unplug all cables and turn it off. Then use a soft, dry or slightly damp cloth. Don't use window cleaners, household cleaners, aerosol sprays, solvents, alcohol, ammonia, or abrasives to clean the device.

Carrying, Handling and Installing the device. The device contains sensitive components. Do not drop, disassemble, open, crush, bend, deform, puncture, shred, microwave, incinerate, paint, or insert foreign objects into it.

Do not operate speakers for an extended period of time with sound distortion. This is an indication of malfunction, which in turn can generate heat and result in a fire.

To reduce the risk of overheating, avoid installing it near heat emitting appliances, such as a room heater or stove.

No naked flame sources such as lighted candles should be placed near the device.

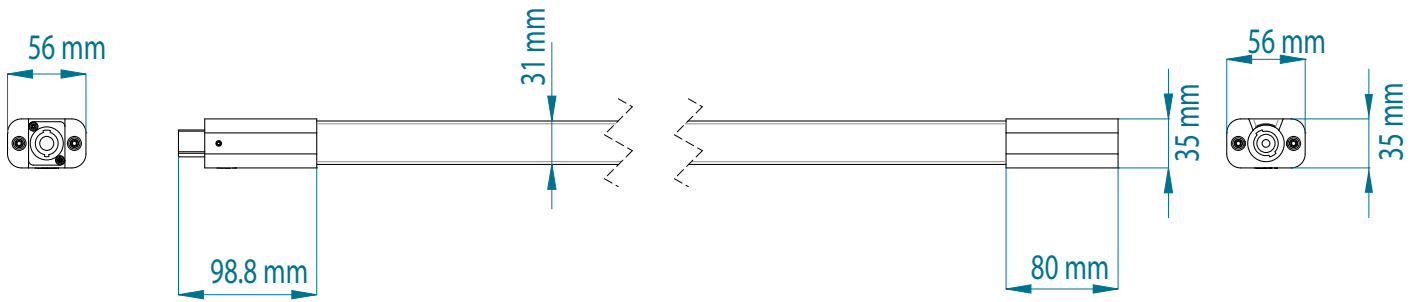
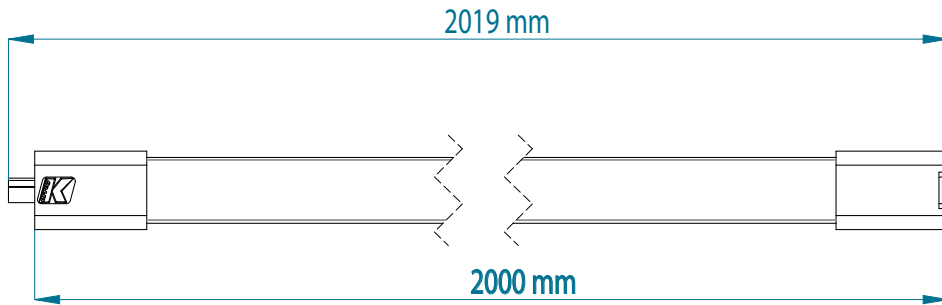
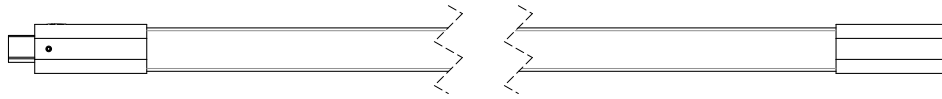
Operate the device in a place where the temperature is between -20°C and 50°C (-4°F to 122° F). Avoid dramatic changes in temperature or humidity when using it, as condensation may form on or within the device.

Set your device up on a stable retaining surface. Install the unit only in a location that can structurally support the weight of the unit, far away from people who can interfere with the stability of the system. In case of outdoor installation, assure that the wind does not interfere with the system's stability, taking extra securities like any certified anchoring systems. Doing otherwise may result in the unit falling down, causing personal injury or property damage. The system should only be suspended by qualified personnel following safe rigging practices. Secure fixings to the building structure are vital. To clarify any doubt you may have, seek help from architects, structural engineers or other specialists.

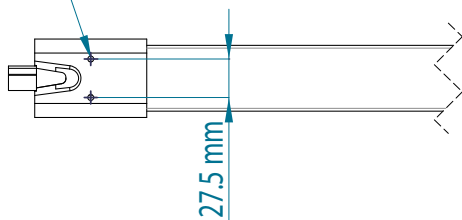
This audio system is not intended for use in nuclear facilities, aircraft navigation or communication systems, air traffic control systems, or for any other use where any malfunction or failure of the audio system could lead to death, personal injury, or severe environmental damage.

Do not make repairs yourself. Caution, risk of electric shock. Do not open the device, it contains potentially hazardous voltage. Never attempt to disassemble, repair or modify the system yourself. Disassembling the unit may cause damage that is not covered under the warranty. The device contains no user-serviceable parts. Repairs should only be performed by manufacturing trained service personnel. Do not connect the unit to an amplifier if you suspect that your device needs service or repair.

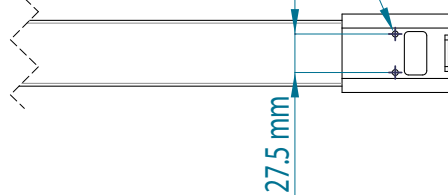
7. PHYSICAL



M5 n°2 Holes

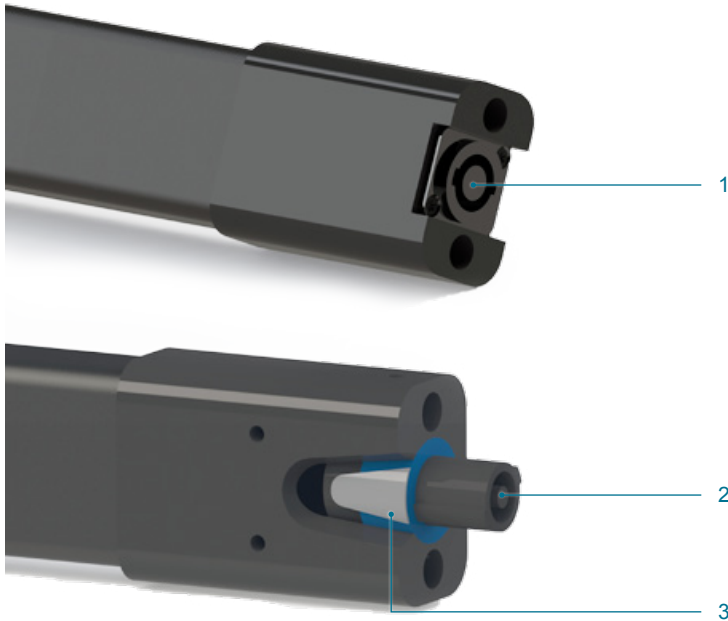


M5 n°2 Holes



WEIGHT: 5.2 Kg
11.5 lb

8 CONNECTORS AND SET UP

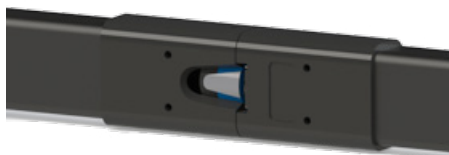
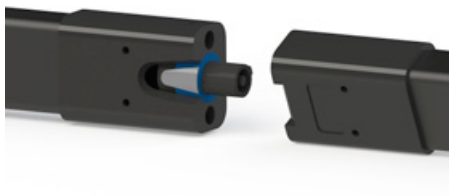


img. 1

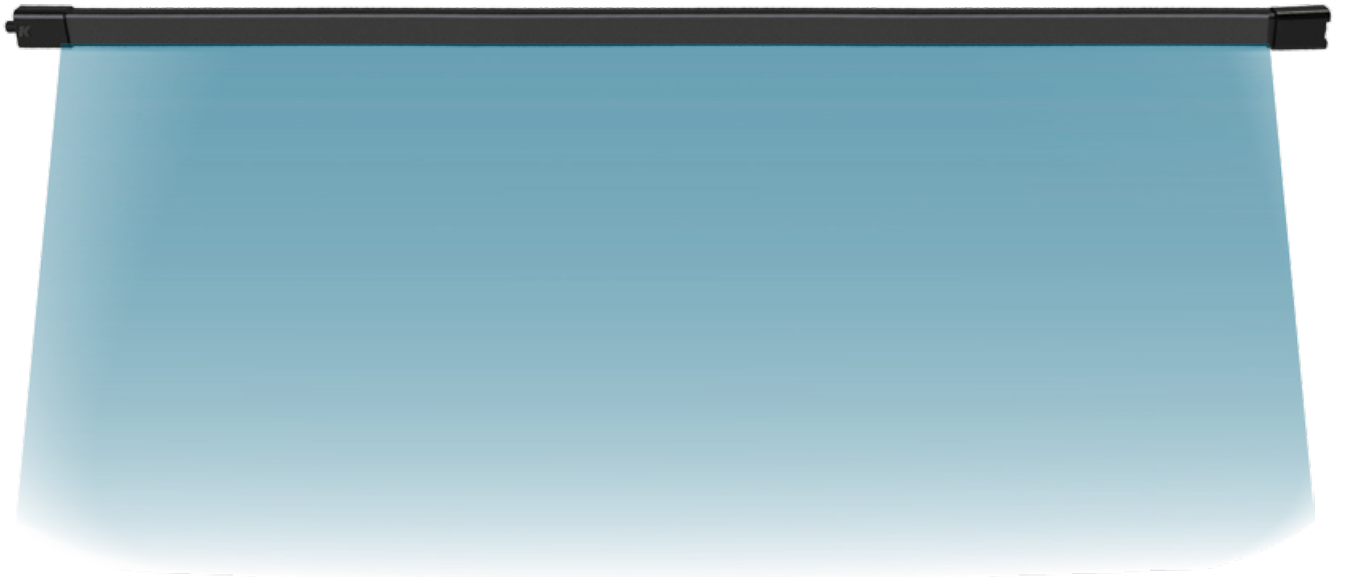
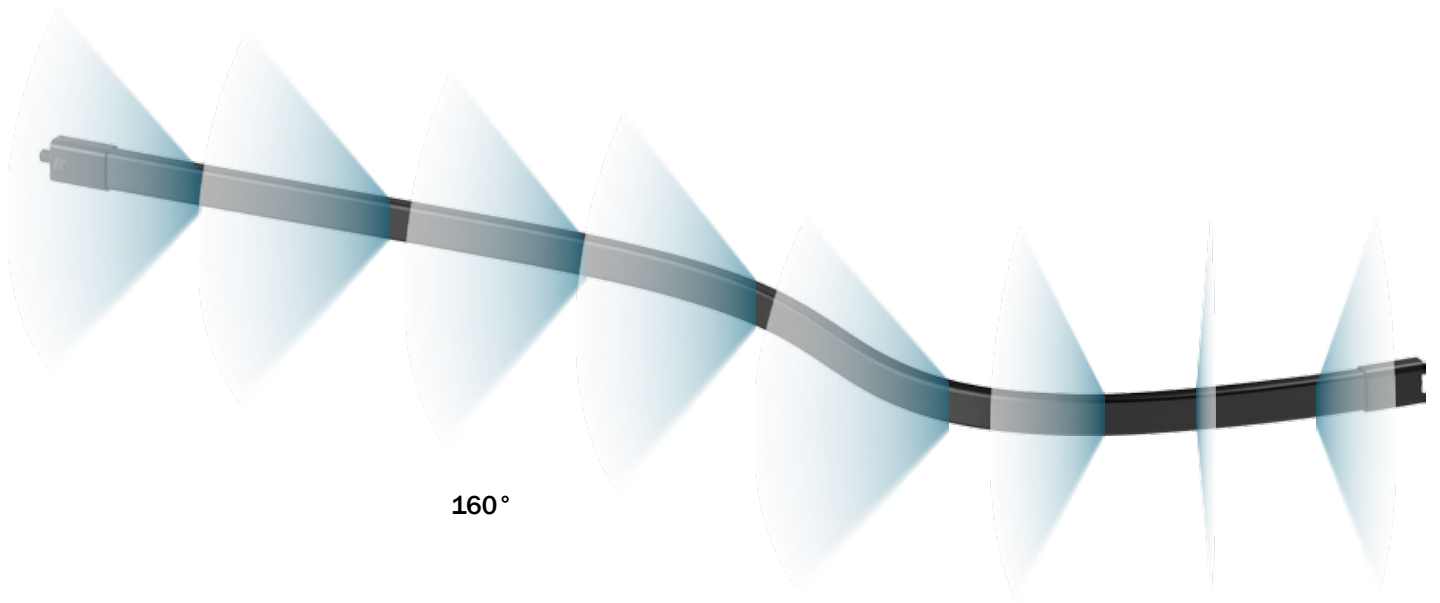
- 1) Powered signal parallel INPUT. Four-pin female speakon.
- 2) Powered signal parallel LINK/OUTPUT. 4-pin male speakon.
- 3) Connector secure lock. Pull it back and turn the connector to unplug it.

FEATURES

Audio power signal on pins 1+/1- of the NL4 connectors is fed into the speaker, while the signal on pins 2+/2- passes through from one socket to the other. Thus, the signal can pass through multiple KAN200+ modules without additional external cabling. Signal on pins 2+/2- can then be easily fed into another KAN200+, another series of KAN200+ modules or a different speaker with the insertion of a K-ANLINK (see p.11). You can connect a series of up to 16 units (32 m) to a single channel of a 4Ω amplifier.



9. COVERAGE



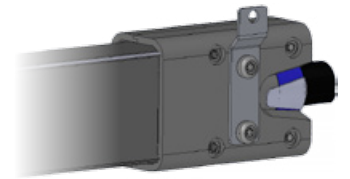
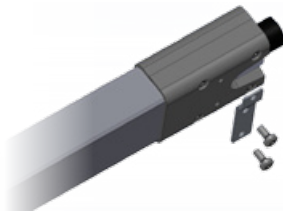
10. ACCESSORIES AND CONFIGURATIONS



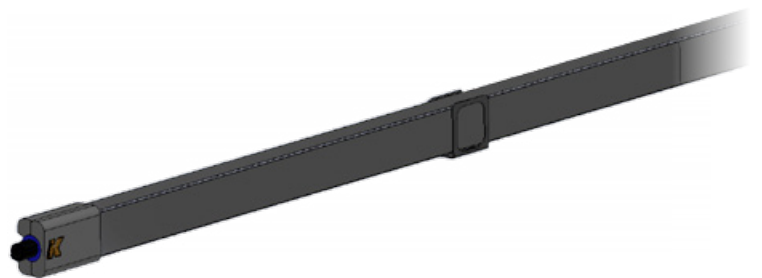
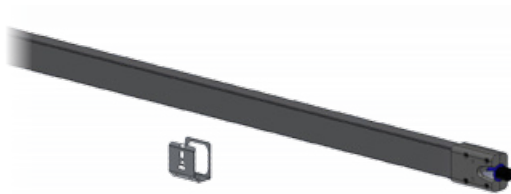
Socks



Wall bracket



Multi purpose bracket



K-ANLINK (not included)



K-ANLINK

Use K-ANLINK to pick the signal up from pins 2+/2- of a KAN200+ NL4 connector to feed into a different loudspeaker. When K-ANLINK is used to connect a KAN200+ to another KAN200+ it integrates perfectly to make a uniform-looking series of speakers.

11. SERVICE

To obtain service:

- 1) Contact the official K-array distributor in your country. Your local distributor will direct you to the appropriate service center.
- 2) If you are calling for service, please have the serial number(s) of the unit(s) available for reference. Ask for Customer Service, and be prepared to describe the problem clearly and completely.
- 3) If the problem cannot be resolved over the phone, you may be required to send the unit in for service. In this case, you will be provided with an RA (Return Authorization) number which should be included on all shipping documents and correspondence regarding the repair. The purchaser is responsible for all shipping charges.

Any attempt to modify or replace components of the device will automatically terminate your warranty. Service must be performed by an authorized K-array service center.



Cleaning:

Use only a soft, dry cloth to clean the housing. Do not use any solvents, chemicals, or cleaning solutions containing alcohol, ammonia, or abrasives. Do not use any sprays near the product or allow liquids to spill into any openings.

12. SPECIFICATIONS

	Acoustics
Speaker power handling	150 W ^(AES)
Max power	300 W ⁽¹⁾
Impedance	32 Ω
Frequency range	150 Hz – 18 KHz +/- 6dB ⁽²⁾
SPL 1W/1mt	89 dB ⁽³⁾
Maximum SPL	102 dB continuous – 106 dB peak ⁽⁴⁾
	Coverage
Horizontal	160°
Vertical	10°
	Crossover
Type	External cross over required
Frequency	150Hz, 24dB/oct suggested minimum
	Transducers
Full-range	16 x 1" Neodymium cone driver with 0.75" voice coil
	Power Audio Input
Connectors	2 x 4-pin speakon (1 female, 1 male)
Wiring	1+ 1- (signal IN & LINK) 2+ 2- (Through)
	Recommended Amplifiers
	KA40 for up to 8 units each channel and KMT12 or KMT18 for up to 4 units
	Certification
IP	55
	Physical
Dimensions	201.9 x 5.6 x 3.53 cm (79.5" x 2.2" x 1.4")
Weight	1.4 Kg (3.09 lbs)

Notes for data

1. Maximum RMS applicable power for a musical signal. The reference signal is the one proposed by EIAJ standard;
2. With dedicated preset;
3. Mesured @8 m, then scaled @1 m;
4. Mesured with musical signal;

New materials and design are introduced into existing products without previous notice. Present systems may differ in some respects from those presented in this catalogue.

15. DECLARATION OF CONFORMITY

Manufacturer/Importer: K-array s.u.r.l.

Brand: K-ARRAY

Address: via Paolina Romagnoli 17 50037 S. Piero a Sieve Firenze ITALY

Date of Issue: 14 / 05 / 2013

Model Code: KAN200

2004/108/EC on the approximation of the Laws of the Member States relating to electromagnetic compatibility.

This declaration applies to all specimens manufactured in accordance with the attached manufacturing drawings which form part of this declaration. Assessment of compliance of the product with the requirements relating to electromagnetic compatibility and low voltage directive was based on the following standards:

EMC:

EN55103-1 2009

EN55103-2 2009

Marking:



Applying Year: 2013

Applied by:

K-array s.u.r.l.

Via Paolina Romagnoli 17

50037 S. Piero a Sieve

Firenze Italy

Tel. +39 055 8487222

Fax +39 055 8487238

Signed by:

Franco Spataro

Technical Manager

K-array s.r.l. a socio unico società soggetta alla attività di direzione e coordinamento di HP Sound Equipment srl
P. IVA / VAT / CF 06206990480 - R.E.A. 609589 Cap. soc. i.v. € 100.000,00

Sede legale: via Paolina Romagnoli 50037 San Piero a Sieve - Firenze - ITALY tel +39 055 8487222 fax +39 055 8487238 info@k-array.com www.k-array.com

The contents of this manual are furnished for informational purposes only. K-array surl assumes no responsibility for any errors or inaccuracies that may appear in this manual. K-array reserves the right to make modifications without prior notice.

UMC057AA01ENB



K-array s.r.l. unipersonale

Via Paolina Romagnoli - 50037
San Piero a Sieve (Firenze) - Italy
tel. +39 055 8487222 - fax. +39 0558487238
e-mail: info@k-array.com
www.k-array.com

