

IE 8

Instructions for use



Important safety instructions

In order to prevent hearing damage:

- ▶ Set the volume to a low level before inserting the ear canal phones into your ears.
- ▶ Listening at high volume levels for long periods can lead to permanent hearing defects. Please protect your hearing!

In order to prevent injury to your auditory canals and ear drums:

- ▶ Mount the suitable earpads (S, M or L) to the ear canal phones. Never insert the ear canal phones without earpads!
- ▶ Always insert and extract the ear canal phones very **carefully** and **slowly**! Do not insert the ear canal phones too deep into your ears!

- ▶ Always keep the ear canal phones dry.

In order to prevent accidents:

- ▶ Do not wear the ear canal phones in an environment that requires your special attention (e.g. in traffic or when performing skilled jobs).

Note on the sound quality

The perceived sound quality and bass performance of the ear canal phones depends to a large extent on the correct fit of the ear canal phones in the ear. For best sound enjoyment, please use the supplied earpads.

Delivery includes

1 IE 8 ear canal phones

1 storage box

Earpads (in pairs):

3 standard (size S, M and L)

3 lamellar (size S, M and L)

2 foam (size S and L)

2 mushroom form
(size S and L)



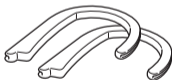
1 cable clip

1 pair of ear hooks

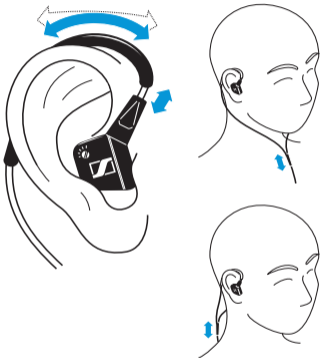
1 cleaning and
adjustment tool

1 user manual

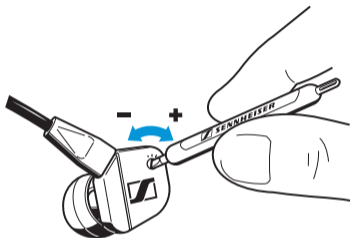
1 dry salt pad



Adjustment to the ear



Adjusting the bass response



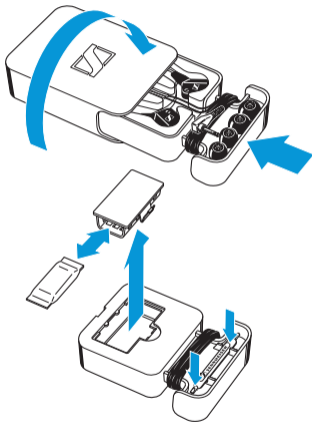
- ▶ To increase (+) or reduce (-) the bass response, turn the control using the supplied adjustment tool.

Changing the cable

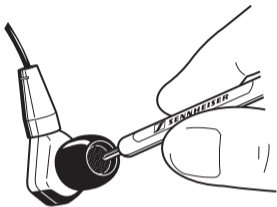


Optionally, you can use a 0.8 m cable (available as standard Sennheiser accessory).

Storage and transportation

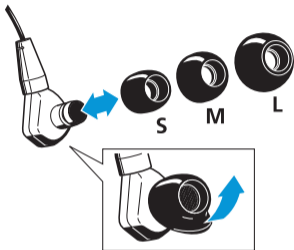


Cleaning



- ▶ Carefully remove buildup from the mesh using the cleaning tool.
- ▶ Use only a slightly damp cloth to clean the ear canal phones. Do not use any solvents or cleansing agents.

Replacing the earpads



Accessories and spare parts are available from your Sennheiser partner. A list of the suitable accessories/spare parts can be found on the Sennheiser homepage at www.sennheiser.com.

Specifications

Weight of the ear canal phones	15 g 5 g without cable
Connector	3.5 mm stereo jack
Cable length	1.2 m
Temperature range	-10 to 55 °C
Impedance	16 Ω
Frequency response	10–20,000 Hz
Noise attenuation (passive)	up to 95% / 26 dB
Sound pressure level	125 dB SPL
THD	< 0.1% at 1 kHz, 100 dB SPL



10





Sennheiser electronic GmbH & Co. KG
Am Labor 1
30900 Wedemark, Germany
Phone +49 (5130) 600 0
Fax +49 (5130) 600 300
www.sennheiser.com



Printed in China
Publ. 06/08
525749 US/A01