

 **SENNHEISER**



Headset
MM 80i TRAVEL

Instruction manual



Important safety instructions

In order to prevent hearing damage and health problems:

- ▶ Set the volume to a low level before inserting the ear canal phones into your ears.
- ▶ Avoid listening at high volume levels for long periods of time.
- ▶ Mount the suitable ear adapters (S, M or L) to the ear canal phones. Never insert the ear canal phones without ear adapters.
- ▶ Always insert and extract the ear canal phones very **carefully** and **slowly**! Do not insert the ear canal phones too deep into your ears.

The product generates weak permanent magnetic fields that could influence cardiac pacemakers and implanted defibrillators (ICDs). If you perceive any influence:

- ▶ Increase the distance between the ear piece and the cardiac pacemaker or implanted defibrillator.

In order to prevent accidents:

- ▶ Do not use the product in an environment that requires your special attention (e.g. in traffic).
- ▶ Keep the product out of reach of children.

In order to prevent damage to the ear canal phones:

- ▶ Do not heat the product (hairdryer, heating, etc.) and do not store in direct sunlight for extended periods.
- ▶ Always keep the product dry.

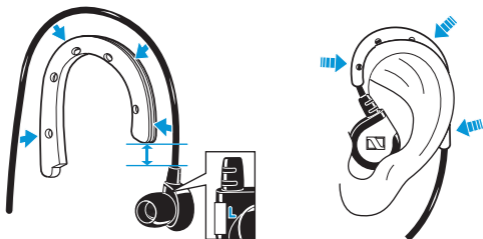
Delivery includes

- 1 MM 80i TRAVEL headset with detachable microphone/remote control cable
- 1 storage box
- 1 in-flight adapter (double mono)
- 3 pairs of ear adapters (size **S**, **M**, **L**), size **M** is pre-mounted to the ear canal phones
- 3 pairs of lamellar ear adapters (size **S**, **M**, **L**) for a snugger fit in the ear canal
- 1 pair of ear hooks (see diagram)
- 1 cleaning tool
- 1 instruction manual



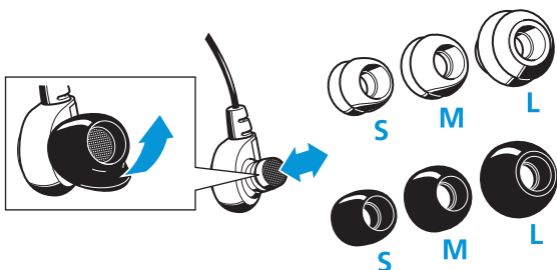
Adjustment to the ear

Adjusting the ear hooks



- ▶ Press the cable of the ear canal phones into the supplied ear hooks as shown. Make sure that there is sufficient space between the ear hooks and the ear canal phones so that you can conveniently adjust the ear canal phones to your ears.
- ▶ Position the ear canal phones on the ear (**L** – left or **R** – right).
- ▶ Bend the ear hooks to ensure an optimum fit on the ear as shown.

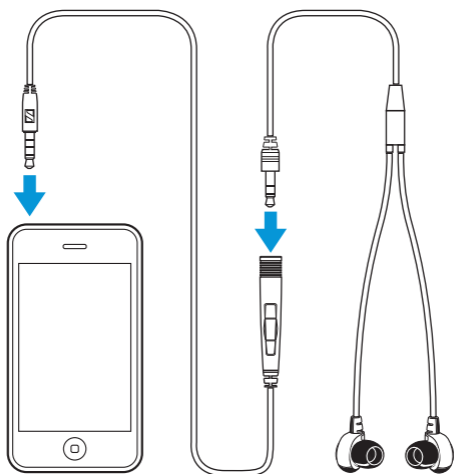
Replacing the ear adapters



- ▶ Carefully remove the ear adapters from the ear canal phones as shown.
- ▶ Mount the new ear adapters to the ear canal phones.

i The perceived sound quality and bass performance of the ear canal phones depends to a large extent on the correct fit of the ear canal phones in the ear. For best sound enjoyment, please use the supplied ear adapters. The ear adapters must seal off your ear canals.

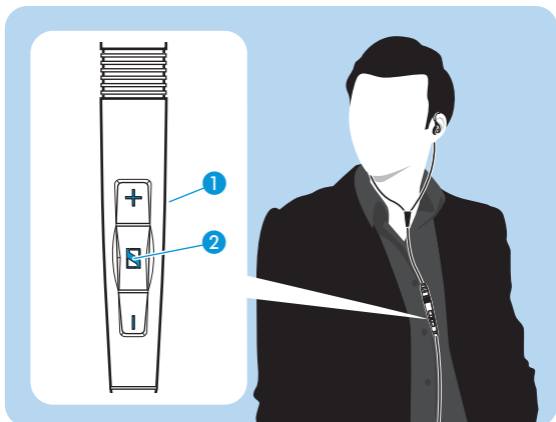
Connecting the MM 80i TRAVEL to an iPhone



- ▶ Connect the ear canal phones to the microphone/remote control cable.
- ▶ Connect the microphone/remote control cable to your iPhone.

Using the MM 80i TRAVEL

- ▶ Place the microphone/remote control cable in front of your chest so that the microphone ① is not covered (see diagram).



Functions of the remote control*

Media functions	Button ②
To play/pause a track/video	Press once
To jump to the next track/chapter	Press twice
To jump to the previous track/chapter	Press three times

Call functions	Button ②
To accept/end a call	Press once
To reject a call	Press and hold for 2 seconds
To activate Voice Control	Press and hold for 2 seconds (when the Home Screen is displayed) and say your voice command

WARNING Hearing damage due to high volumes!



Listening at high volume levels for long periods can lead to permanent hearing defects.

- ▶ Set the volume to a low level before using the product.
- ▶ Do not continuously expose yourself to high volumes.

Volume functions	+ and - button
To increase the volume	Press the + button
To reduce the volume	Press the - button

* These functions have to be supported by your iPod/iPhone/iPad model.

Connecting the in-flight adapter

CAUTION Danger of malfunction!



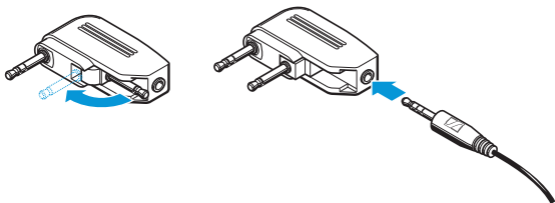
The transmitted radio waves of a mobile phone can impair the operation of sensitive and unprotected devices.

- ▶ Only make calls with the headset in locations and aircraft where the use of mobile phones is permitted.

The supplied in-flight adapter is for connection to the in-flight entertainment system of the aircraft. When operating the ear canal phones in the aircraft, **always** use the in-flight adapter!

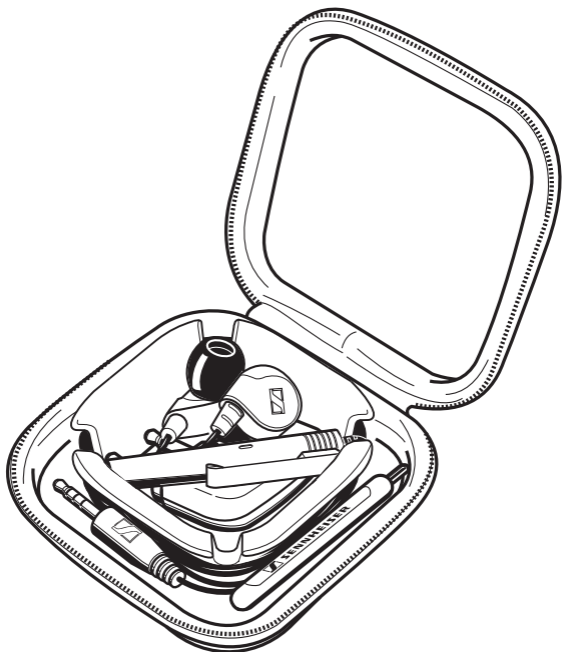


The seats on some aircraft are equipped with a small **2.5 mm** jack socket as part of the audio socket. This small socket cannot be used by the product.



- ▶ Fold out the second jack plug of the in-flight adapter if there are two 3.5 mm jack sockets (double mono) in the aircraft.
- ▶ Plug the in-flight adapter onto the jack plug of the microphone/remote control cable.
- ▶ Connect the in-flight adapter to the **3.5 mm** stereo jack socket or the twin **3.5 mm** mono sockets in the aircraft.

Transporting the MM 80i TRAVEL



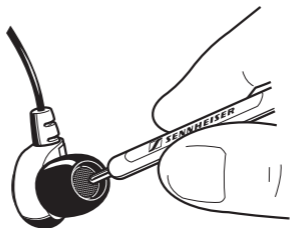
- ▶ Stow the ear canal phones, the microphone/remote control cable, the in-flight adapter and the cleaning tool in the storage box as shown.

Cleaning the MM 80i TRAVEL

CAUTION Liquids can damage the product!

Liquids entering the housing of the product can cause a short-circuit in the electronics or damage the mechanics. Solvents or cleansing agents can damage the surfaces of the product.

- ▶ Do not use any solvents or cleansing agents.
-



- ▶ Only use a dry and soft cloth to clean the product from time to time.
- ▶ Use the supplied cleaning tool to carefully remove buildup from the mesh.



For reasons of hygiene, the ear adapters should be replaced from time to time (see page 3). Spare ear adapters are available from your Sennheiser partner.

Accessories/spare parts

Accessories and spare parts are available from your Sennheiser partner.

▶ Only use Sennheiser accessories and spare parts.

Cat. No.	Accessory/spare part
525783	Ear adapters, 5 pairs, size S
525784	Ear adapters, 5 pairs, size M
525785	Ear adapters, 5 pairs, size L
525738	Lamellar ear adapters, 5 pairs, size S
525739	Lamellar ear adapters, 5 pairs, size M
525740	Lamellar ear adapters, 5 pairs, size L
525733	Cleaning tool
529799	Ear hooks, 1 pair
504129	In-flight adapter (3.5 mm double mono jack plug)

Specifications

MM 80i TRAVEL headset

Connector	3.5 mm jack plug (4-pin) for Apple iPod/iPhone/iPad
Temperature range	-10°C to 55°C
Cable length	1.3 m
Weight	18 g

Ear canal phones

Impedance	16 Ω
Frequency response	10 to 18,000 Hz
Noise attenuation (passive)	up to 90% / 20 dB
Sound pressure level	104 dB SPL
THD	< 0.1% at 1 kHz, 100 dB SPL

Microphone

Frequency response	80 to 15,000 Hz
--------------------	-----------------

Pick-up pattern	omni-directional
-----------------	------------------

Sensitivity	-42 dB V/Pa
-------------	-------------

Manufacturer Declarations

Warranty

Sennheiser electronic GmbH & Co. KG gives a warranty of 24 months on this product.

For the current warranty conditions, please visit our website at www.sennheiser.com under "Service & Support" or contact your Sennheiser partner.

Declaration of Conformity



This product is in compliance with the essential requirements and other relevant provisions of directives: EMC 2004/108/EC, RoHS 2002/95/EC, WEEE 2002/96/EC.



CE declaration is available at www.sennheiser.com.

Before putting the product into operation, please observe the respective country specific regulations!

WEEE Declaration



Please dispose of this product by taking it to your local collection point or recycling center for such equipment.

Trademarks

Sennheiser is a registered trademark of Sennheiser electronic GmbH & Co. KG.

"Made for iPod", "Made for iPhone" and "Made for iPad" mean that an electronic accessory has been designed to connect specifically to iPod, iPhone, or iPad, respectively, and has been certified by the developer to meet Apple performance standards. Apple is not responsible for the operation of this device

or its compliance with safety and regulatory standards. iPhone and iPod are trademarks of Apple Inc., registered in the U.S. and other countries. iPad is a trademark of Apple Inc.



Statements regarding FCC and Industry Canada

FCC Declaration of Conformity (DoC)	
	The logo features the letters "FCC" in a large, bold, sans-serif font. To its right, the word "SENNHEISER" is written in a smaller, all-caps, sans-serif font. Below "SENNHEISER", the text "Model No: MM 80i TRAVEL" is written in an even smaller, all-caps, sans-serif font.
We,	Sennheiser Electronic Corporation Strat. Marketing • Stefanie Reichert One Enterprise Drive • Old Lyme • CT 06371 • USA Tel: +1 (860) 434 9190, ext. 144 Fax: +1 (860) 434 1759
declare the above device comply with the requirements of Federal Communications Commission.	
This device complies with Part 15 of the FCC rules. Operation is subjected to the following two conditions: 1) This device may not cause harmful interference, and 2) This device must accept any interference received, including interference that may cause undesired operation.	
Responsible Party: John Falcone	

This device complies with Part 15 subpart b of the FCC Rules. Operation is subject to the following two conditions: (1) this device may not cause harmful interference, and (2) this device must accept any interference received, including interference that may cause undesired operation.

This equipment has been tested and found to comply with the limits for a Class B digital device, pursuant to Part 15 of the FCC Rules. These limits are designed to provide reasonable protection against harmful interference in a residential installation. This equipment generates, uses and can radiate radio frequency energy and, if not installed and used in accordance with the instructions, may cause harmful interference to radio communications. However, there is no guarantee that interference will not occur in a particular installation. If this equipment does cause harmful interference to radio or television reception, which can be determined by turning the equipment off and on, the user is encouraged to try to correct the interference by one or more of the following measures:

- Reorient or relocate the receiving antenna.
- Increase the separation between the equipment and receiver.
- Connect the equipment into an outlet on a circuit different from that to which the receiver is connected.
- Consult the dealer or an experienced radio/TV technician for help.

Changes or modifications made to this equipment not expressly approved by Sennheiser electronic Corp. may void FCC authorization to operate this equipment.

This Class B digital apparatus complies with Canadian ICES-003.



Sennheiser Communications A/S
Langager 6, 2680 Solrød Strand, Denmark
www.sennheiser.com

Printed in China
Publ. 07/10
A01